

BioLite N2

Outdoor IP Fingerprint Terminal



BioLite N2 Suprema's 2nd generation outdoor fingerprint terminal that offers comprehensive access control and time attendance features based on Suprema's latest biometric technology and security platform. BioLite N2 provides class-leading performance and security by featuring Suprema's latest fingerprint algorithm coupled with the world's best fingerprint sensor. Packed in a rugged IP67 housing, BioLite N2 brings added flexibility in system design with its multi-class RFID reading technology.

BioLite N2

Outdoor IP Fingerprint Terminal

Features



- Best-in-class Performance**
- Latest Suprema fingerprint algorithm
 - Powerful 1.2 GHz CPU



- Multi RFID Card Reading**
- LF(125kHz), HF(13.56MHz) dual band
 - Reads all card types including Mobile Card (NFC and BLE)



- Advanced Accuracy & Security**
- High-precision OP6 optical sensor



- IP67 Certified Dust & Water Protection**
- Ideal for harsh environment and outdoor installation



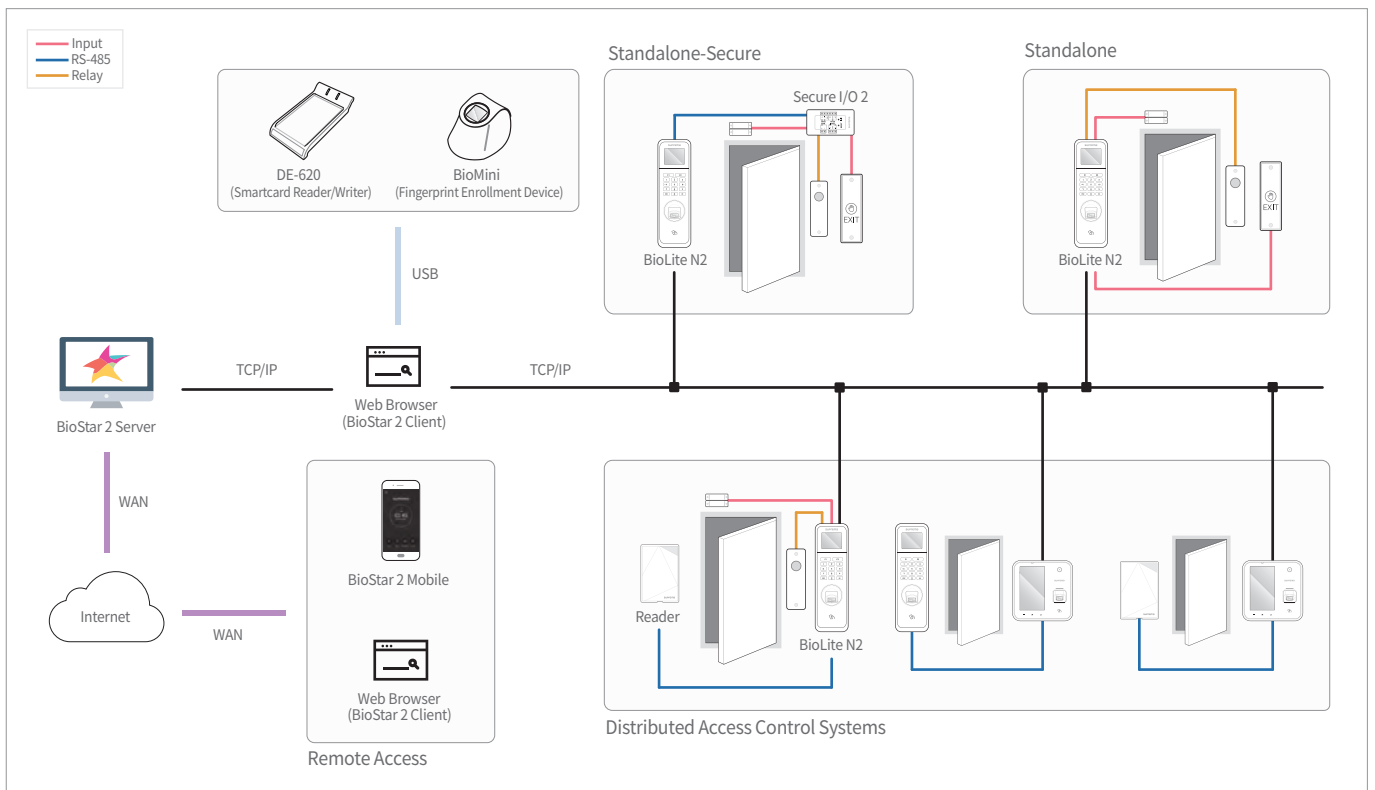
- Full Time Attendance Features**
- Colour LCD with Keypad for time attendance functionality

Specifications

Biometric		Fingerprint	
Sensor Type		Optical Sensor (OP6)	
Template		SUPREMA / ISO 19794-2 / ANSI 378	
Extractor / Matcher		MINEX certified and compliant	
RF Option		BLN2-ODB	BLN2-OAB
		125kHz EM & 13.56MHz MIFARE, MIFARE Plus, DESFire/EV1 & 2.4GHz BLE	125kHz EM, HID Prox & 13.56MHz MIFARE, MIFARE Plus, DESFire/EV1, FeliCa, iCLASS SE/SR, NFC & 2.4GHz BLE
CPU		1.2 GHz	
Memory		4GB Flash + 64MB RAM	
Max. User		10,000	
Max. Template		20,000*	
Max. Logs		1,000,000	
LCD		1.77" colour LCD	
Sound		16-bit Hi-Fi	
Ethernet		10/100 Mbps, auto MDI/MDI-X	
RS-485		1ch Host or Slave (Selectable)	
Wiegand		1ch Input or Output (Selectable)	
TTL		2ch Input	
Relay		1 Relay	
Ingress Protection		IP67	
Tamper		Supported	
Power		DC 12V	
Operating Temperature		-20°C ~ 50 °C	
Operating Humidity		0% ~ 80%, non-condensing	
Dimensions (WxHxD,mm)		58 x 190 x 44	
Certificates		CE, FCC, KC, RoHS, REACH, WEEE	

* Two templates per finger

System Configurations



Suprema - AFRICA

108 Eleventh Street, Parkmore, Sandton - SOUTH AFRICA

Tel: +27 11 787 3894 | +27 86 552 0819 | enquiry@suprema.co.za | www.suprema.co.za

©2018 Suprema Inc. Suprema and identifying product names and numbers herein are registered trade marks of Suprema, Inc. All non-Suprema brands and product names are trademarks or registered trademarks of their respective companies. Product appearance, build status and/or specifications are subject to change without notice. [AHL-BLN2-180403-04-EN]